

LEGAULT MOUNTAIN

FOREST RESTORATION & WILDFIRE MITIGATION



February - September, 2022

Denver Mountain Parks Forestry and Natural Resources Program



DENVER
THE MILE HIGH CITY



PROJECT OVERVIEW

Denver Mountain Parks will treat 135 acres of mixed conifer forest on the Legault Mountain tract from from February through September, 2022.

This important project will help to promote greater forest diversity, improve forest structure, enhance wildlife habitat, and help to reduce wildfire severity. The project will mostly target overgrown lodgepole pine stands. Ponderosa pine will be retained where it occurs naturally, and Douglas-fir, aspen, blue spruce, and rocky mountain juniper will be retained to promote biological diversity.



OVERGROWTH



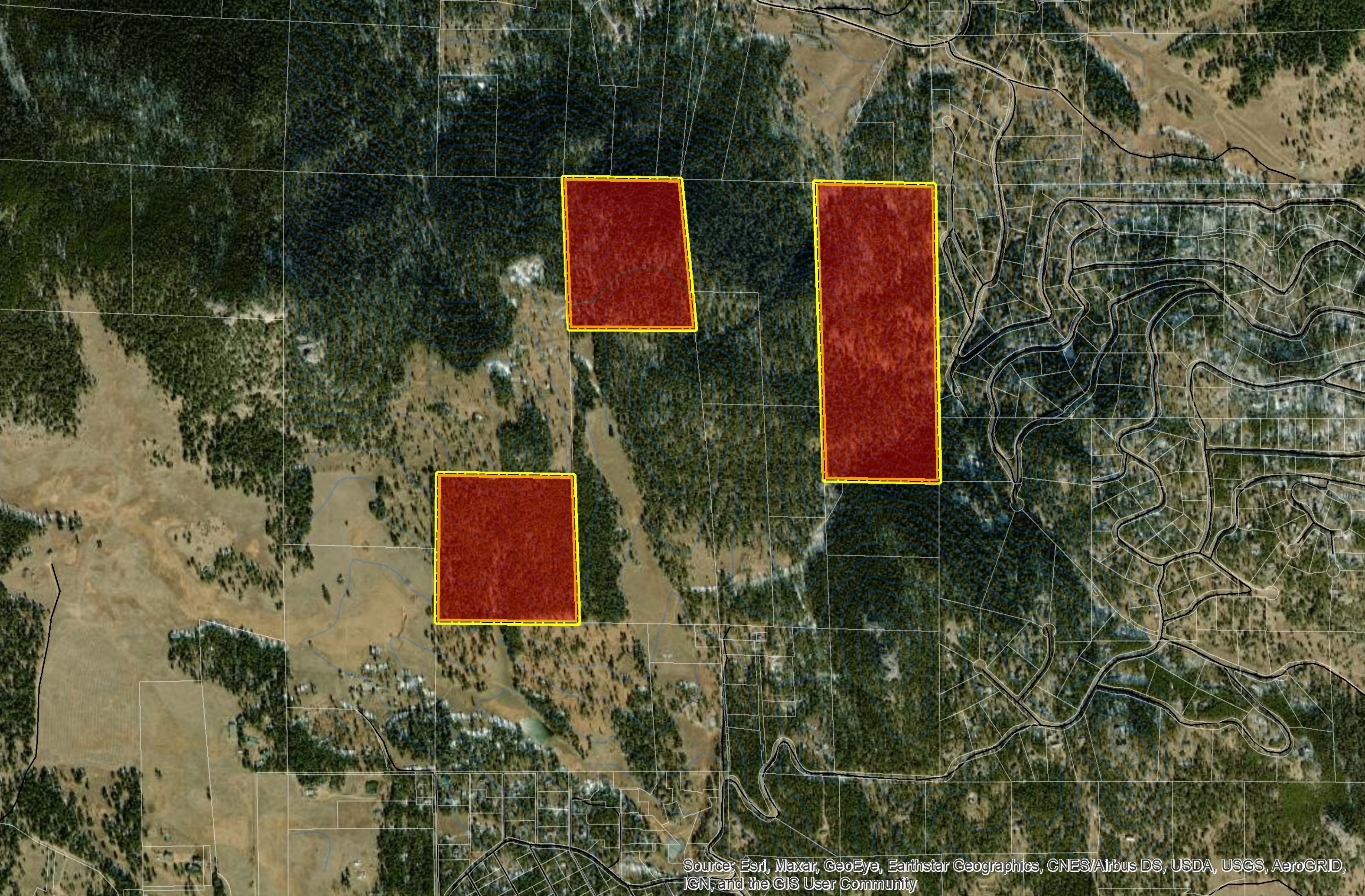
**FOREST
TREATMENT**



**SUSTAINABLE
FOREST**

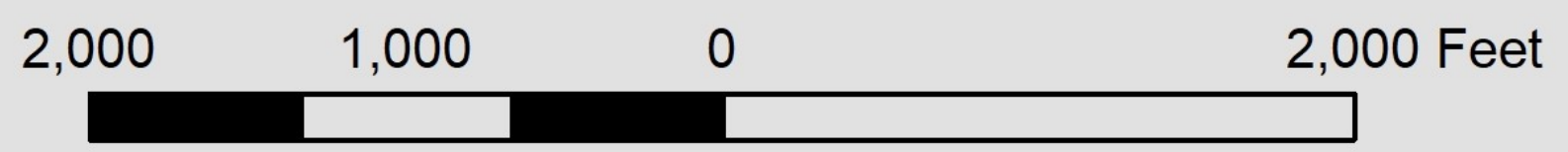


PROJECT LOCATION



Source: Esri, Maxar, GeoEye, Earthstar Geographics, CNES/Airbus DS, USDA, USGS, AeroGRID, IGN, and the GIS User Community

Legault Mountain 2022 Forestry Project Areas



The City and County of Denver shall not be liable for damages arising out of the use of this information. The information is provided "as is" without warranty of any kind, expressed or implied, including, but not limited to the fitness for a particular use.

PURPOSE OF FOREST TREATMENT

Here's why treating 135 acres of forest at the Legault Mountain tract is important:



OVERGROWTH IS HAZARDOUS

Historically, low severity fires removed pockets of new growth and reduced the build-up of seedlings and forest debris. When trees grow too close together and the forest floor accumulates flammable material like dead trees and shrubs, the forest becomes unhealthy and wildfires have the potential to become extremely destructive.



FOREST TREATMENTS ARE NECESSARY

Forest managers mimic the role of natural fire on the landscape by using tools like chainsaws, masticators, and timber harvesting equipment. Healthy, treated forests aren't always pretty, and you may see wide open areas, wood chips, and other changes. But don't worry, these changes are intentional and necessary.



TREATED FORESTS ARE SUSTAINABLE

Removing 5-15 acre patches of forest primarily within lodgepole stands will help to invigorate the growth of meadows and aspen trees, and reduces competition for resources among trees. The remaining trees will grow larger and stronger, and the forest will have a better chance at survival if a wildfire does occur.

PROJECT TIMELINE

The Legault Mountain tract forest restoration project is divided into three phases:

Phase 1

Forest inventory, data collection, and draft forest treatment plan



Completed in 2021

Phase 2

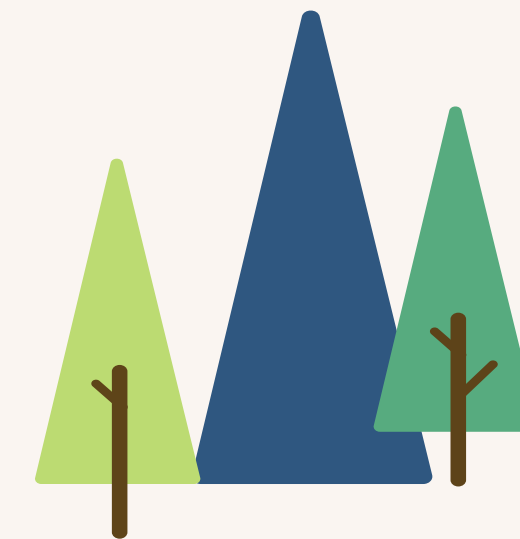
Heavy equipment mobilization and forest treatment implementation



February - September, 2022

Phase 3

Monitoring, noxious weed treatment, erosion control, mitigating soil compaction, and monitoring related impacts



2022 - 2025



WHAT DOES FOREST TREATMENT LOOK LIKE?

Here's what to expect before and after a successful forest treatment.

BEFORE

< **VS** >

AFTER





CONTACT US



Please reach out to us with questions or comments.

Program Manager: Andy Perri 303-718-8663
Andrew.Perri@denvergov.org



DENVER
THE MILE HIGH CITY